




Parts and Accessories

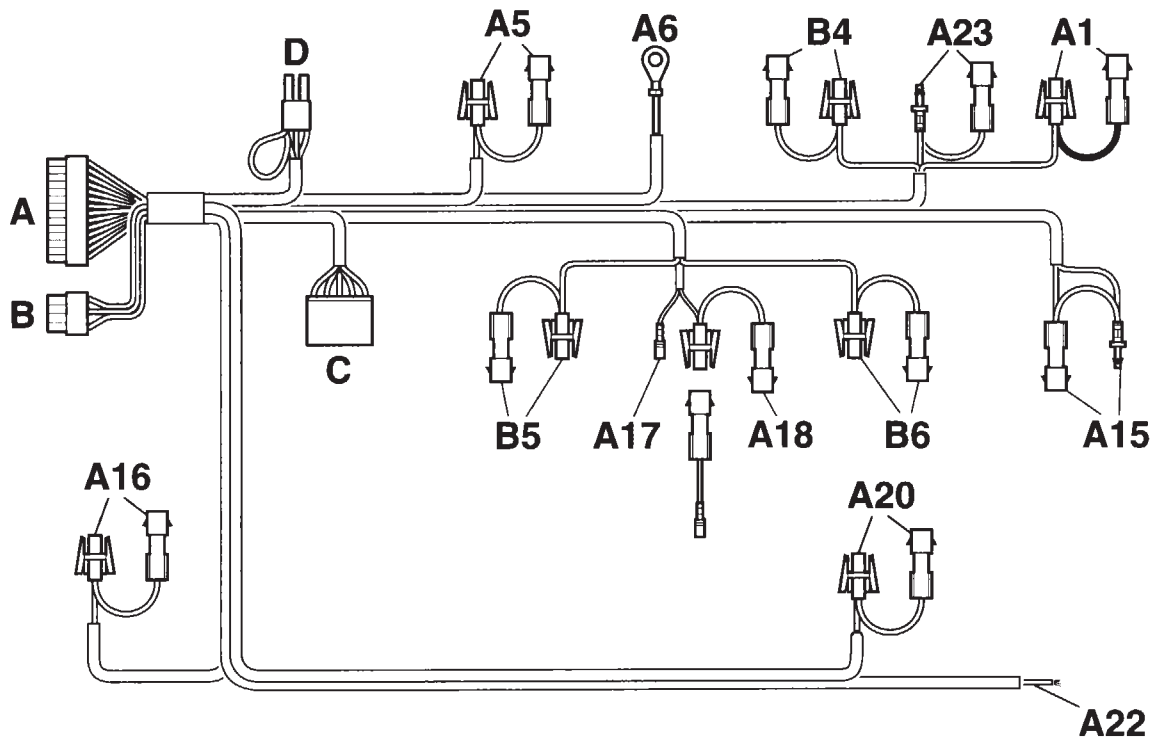
Fitting instructions

Supplementary sheet to fitting instructions for DWA III and IV for BMW 3 Series (E 36), 5 Series (E 34) and 7 Series (E 32) models

The fitting instructions for the DWA III and IV for the above models are still valid. As part of our on-going development work the DWA III and IV systems are to be replaced by the new DWA V alarm system. The DWA V alarm system differs from its predecessors by virtue of the following feature. The DWA V can be deactivated by a personal code (override function) if a fault occurs. This means that there is no need to fit an emergency lock.

1. Connection diagram for the alarm system wiring harness For E 32, E 34 and E 36 cars with a separate remote key

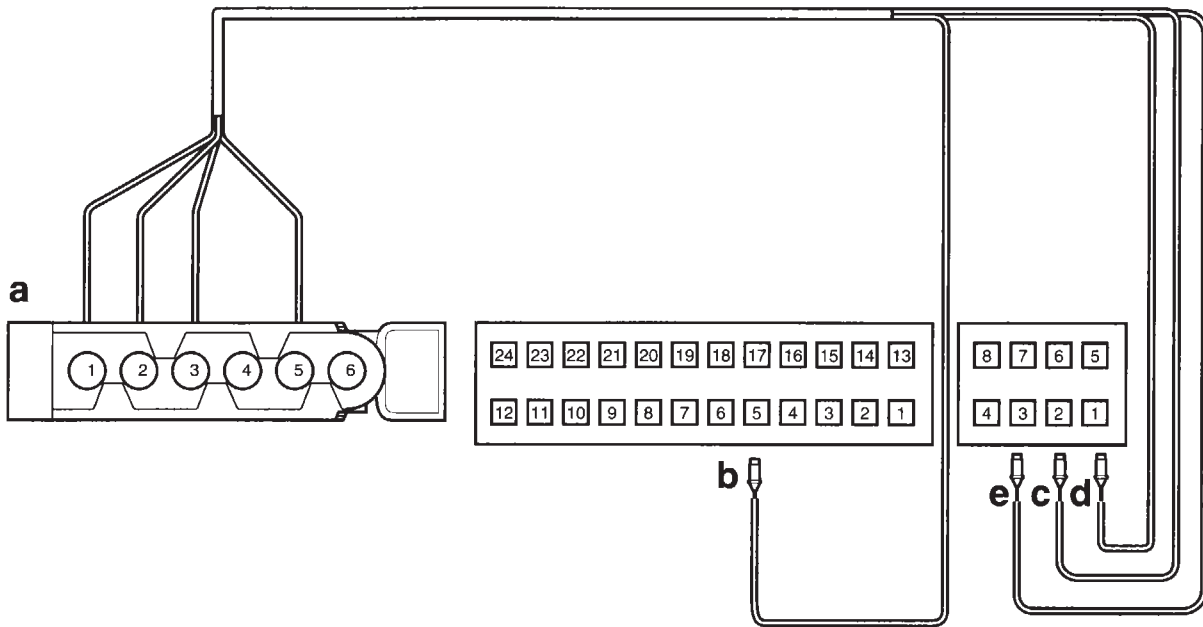
 The connection diagram for the alarm system wiring harness below only describes the differences from the connections on the **A20** and **A24**. ◀



F 36 00 001 W

Position	Description	Cable colour	Connection position in vehicle
A20	Branch cable 61	blue/white	Branch not needed, insulate and tie back cable.
A24	Branch engine bonnet contact	black	This branch is no longer carried out separately. The cable for the engine bonnet contact has already been pre-wired to the connector C and from there is run together with the siren wiring harness to the engine compartment.

2. Connection diagram for the tilt alarm wiring harness (optional)



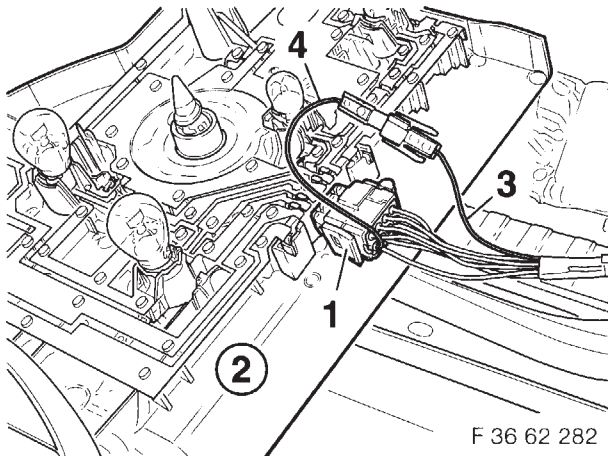
F 36 82 915 R

! Due to technical modifications the tilt alarm sensor must not be connected as described in the fitting instructions 01 29 9 789 088. It must be noted that the branch **b** cable colour black/red/yellow is connected to the 24 pole connector **A** in the alarm control centre, connector slot no. 5. ◀

Position	Description	Connector a	Cable colour	Connection position in the vehicle
a	6 pole white connector	—	—	Tilt alarm sensor
b	Branch terminal R	5	black/red/yellow	Digital theft alarm system, white 24 pole connector, connector slot no. 5 (cable colour violet/white. Separate cable from slot no. 5 at suitable position and connect branch b via AMP contacts.
c	Branch tilt sensor	1	black/white/yellow	Digital theft alarm system, white 8 pole connector, connector slot no. 2
d	Branch terminal 30	2	red/grey/yellow	Digital theft alarm system, white 8 pole connector, connector slot no. 1
e	Branch terminal 31	3	black	Digital theft alarm system, white 8 pole connector, connector slot no. 3

3. Connecting luggage compartment switch

On E 36/5 vehicles only



On E 36/5 vehicles with CL only

A22 Lay branch luggage compartment switch, cable colour brown/white, on the right hand side of the vehicle along the vehicle wire harness, towards the rear, to the right rear light. Disconnect the black 8 pole connector (1) from the rear light unit (2). Detach connector (1) and press out cable from pin 3, cable colour brown/white. Crimp branch **A22** with bridging wire (4) and press into pin 3. Connect cable (3), cable colour brown/white to the bridging wire (4) via 1 pole connector.

On E 36/5 vehicles with GM module only

A22 Lay branch luggage compartment switch, cable colour brown/white, on the right hand side of the vehicle along the vehicle wire harness, towards the rear, to the right rear light. Disconnect the black 8 pole connector (1) from the rear light unit (2). Detach connector (1) and press out cable from pin 4, cable colour red/white. Crimp branch **A22** with bridging wire (4) and press into pin 4. Connect cable (3), cable colour brown/white to the bridging wire (4) via 1 pole connector.

! On E 36/5 vehicles with GM module, the following 2 points must be re-programmed once the DWA has been installed:

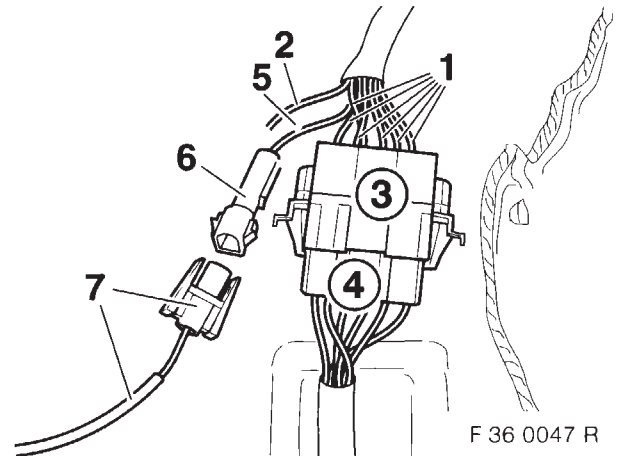
In program step 11 the alarm input on the luggage compartment switch must be set to "positive".

In program step 21 the "auto-test" must be set to "no".

For further instructions on the procedure to be followed see the **Programming Manual 01 29 9 789 189**. ◀

4. To connect the emergency-current siren

E 36 cars with a remote key as standard only



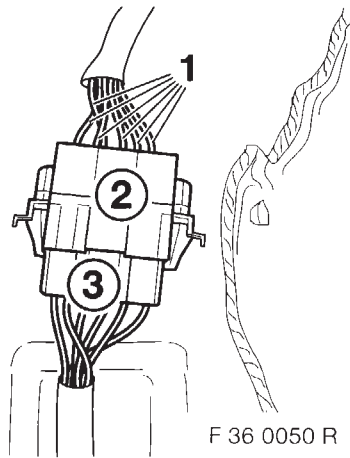
Cut the cables on the emergency-current siren wiring harness (1) to the correct length. Insulate the connection cable (2), cable colour red/black, and tie it back. Fit the connection cable (5), cable colour black, with a pin contact and casing (6). Fit branch **A24** (7), cable colour brown/violet, with a slot contact and casing. Connect branch **A24** and the pin contact casing (6). Crimp a flat plug contact to the ends of the remaining cables on the siren wiring harness (1).

Insert the flat plug contacts in the connection plug (3) as follows:

Slot 1	=	cable colour brown
Slot 2	=	cable colour not used
Slot 3	=	cable colour white/black
Slot 4	=	cable colour violet/grey
Slot 5	=	cable colour brown/red
Slot 6	=	cable colour red

Connect the plug (3) on the siren wiring harness to the plug (4) on the alarm system wiring harness.

E 32, E 34 and E 36 cars with a separate remote control only



Cut the cables on the emergency-current siren wiring harness (1) to the correct length. Insulate the connection cable (2), cable colour red/black, and tie it back.

Crimp a flat plug contact to the ends of the remaining cables on the siren wiring harness (1).

Insert the flat plug contacts in the connection plug (2) as follows:

Slot 1	=	cable colour brown
Slot 2	=	cable colour brown/red
Slot 3	=	cable colour white/black
Slot 4	=	cable colour violet/grey
Slot 5	=	cable colour black
Slot 6	=	cable colour red

Connect the plug (2) on the siren wiring harness to the plug (3) on the alarm system wiring harness.


5. To calibrate a new remote control

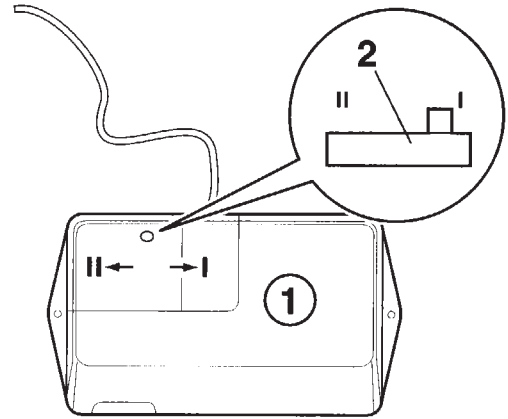
E 32, E 34 and E 36 cars with a separate remote control only

Every DWA V is capable of learning four different codes, in other words new remote controls can be calibrated and used as replacements if the original one is lost.

To change the transmission codes (activation codes), proceed as follows:


- a** Close the driver's door and deactivate the DWA V. (The driver's door must be closed since otherwise no signal from the central locking system is possible)

 If you no longer have a remote control to deactivate the DWA V, the DWA unit must be replaced (including all remote controls). ◀

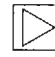


F 39 82 131 R

- b** Remove the sealing stopper from the top of the DWA unit (1). Carefully move the slide switch (2) into position II using a small straight slot screwdriver.

 Under no circumstances may the slide switch (2) be moved to position I for the transfer of the codes. ◀

- c** Activate the DWA unit using the new remote control by pressing the red ON button once.
- d** To show that the new code has been learned and saved correctly, the central locking will be activated. Depending on the initial status of the DWA V, the central locking will either be opened or closed.

 Repeat steps **c** and **d** to calibrate another remote control. The DWA unit must be activated in this case by pressing the grey OFF button. ◀

Example

The DWA V is deactivated and the slide switch (2) is in position II:

Remote control 1 is to be activated using the ON button.


Remote control 2 is to be activated using the OFF button.

Remote control 3 is to be activated using the ON button.

Remote control 4 is to be activated using the OFF button.

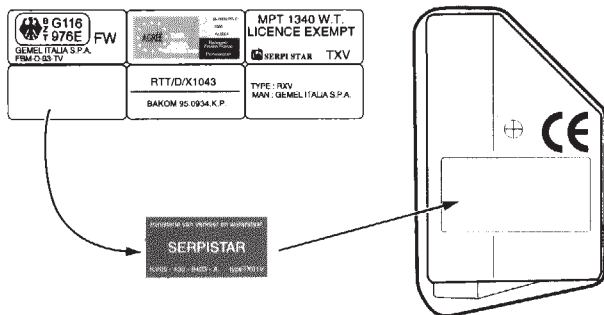
This method can be used to calibrate up to four remote controls.

- e** Make sure that you carefully return the slide switch (2) to position I using a small straight slot screwdriver.


 The slide switch (2) must then not be returned to position II since otherwise the DWA V will be reset and all the saved codes will be lost. The calibration process must then be repeated from the beginning. ◀

6. To affix the specific national licensing sticker

E 32, E 34 and E 36 cars with a separate remote control only



F 39 82 137 R

 The appropriate licensing stickers must be affixed to the rear of both remote controls for the following national versions (see example). ◀

A:
Österreich

TYPE : RXV
MAN : GEMEL ITALIA S.p.A.

B:
Belgique
België

RTT/D/X1043
BAKOM 95.0934.K.P

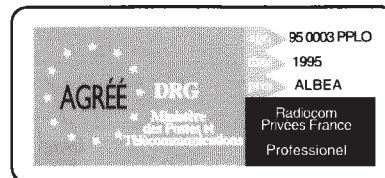
CH:
Schweiz

RTT/D/X1043
BAKOM 95.0934.K.P

D:
Deutschland



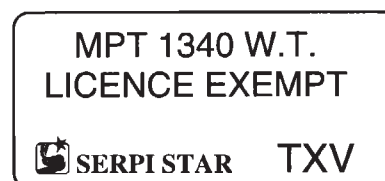
F:
France



NL:
Nederland




UK:
United Kingdom




Affix the appropriate national licensing stickers as shown.

7. Deactivation of the DWA V using a personal code

If the remote control or the DWA V suffers a defect you can deactivate the DWA V using your personal code.

 **The yellow envelope included in the fitting kit must not have been opened by the workshop personnel.** This envelope contains your personal code. The envelope is to be given to the owner of the car when the car is handed over to him or her, and must still be sealed. ◀

 For further instructions on how to deactivate the DWA V, see supplementary operating instructions for the DWA V (order No. 01 29 9 416 231). ◀